



QUIPU X

Smart Mobility Systems

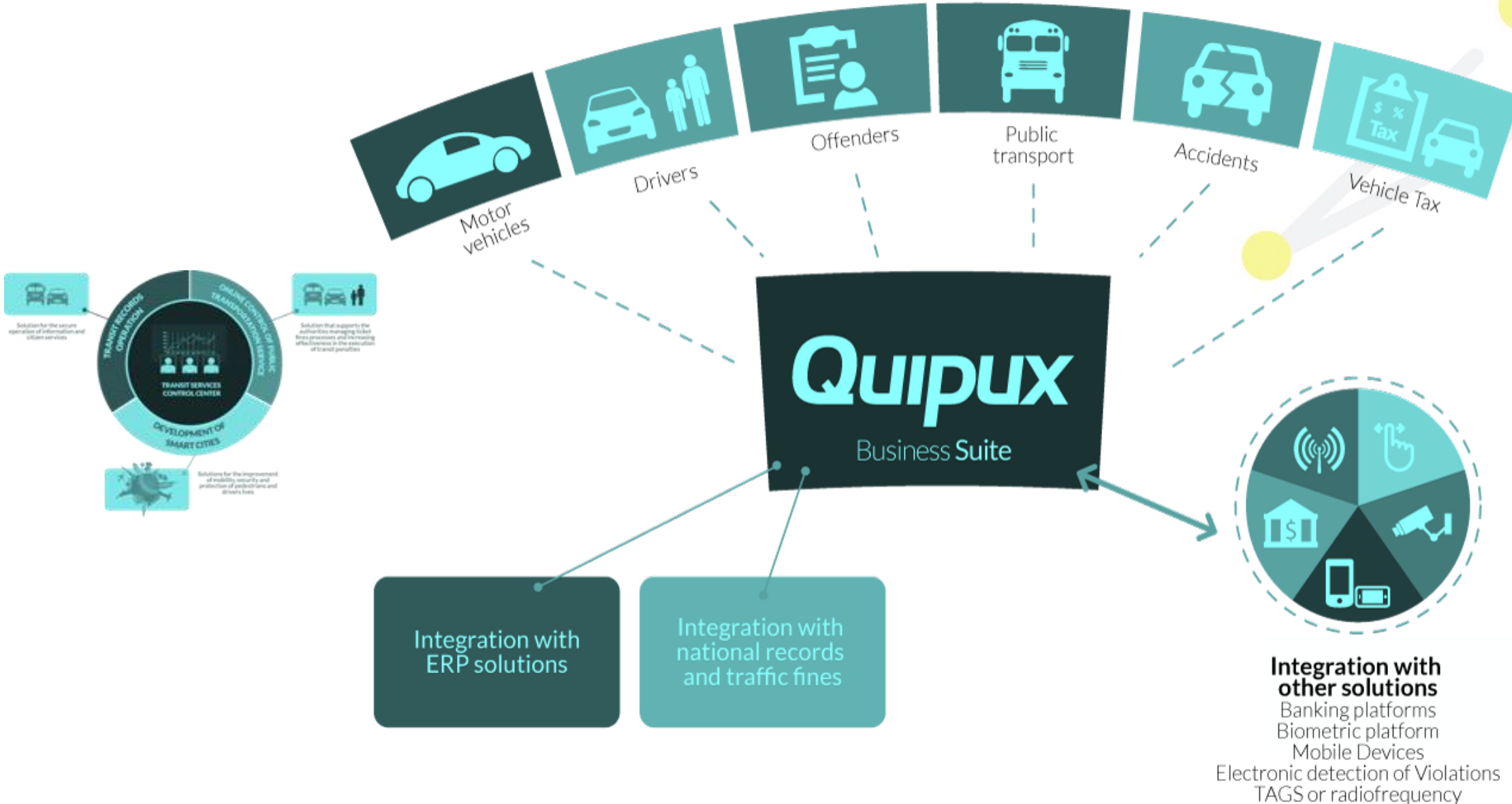
Successful case Medellin- Colombia

Quipux creates **innovative solutions** and accompanies governments in their operation under **self-sustaining private public partnership models** that helps to solve real problems of transit, transportation and mobility, **to improve the quality of life of citizens.**



Quipux has more than **21 years**, with costumers in more **than 50 cities** within Colombia, Brazil and Ivory Coast,

# Business Suite



# Transforming cities towards sustainability



- Improving the citizens' perceptions about the government services.
- Increasing the respect of the traffic regulations and the pedestrian protection.
- Reducing users' service time from weeks to minutes.
- Creating multiple service channels for the citizens.
- Integrating and simplify processes.
- Increasing collections (database).
- Strengthening the authority of traffic and transportation.
- Reducing accidents and traffic fatalities.



QUIPUX

Smart Mobility Systems

Successful case Medellin- Colombia



# Medellín



# Medellín in numbers



**7,9%** is Medellín's contribution to the Colombian GDP



**2.464.322** citizens



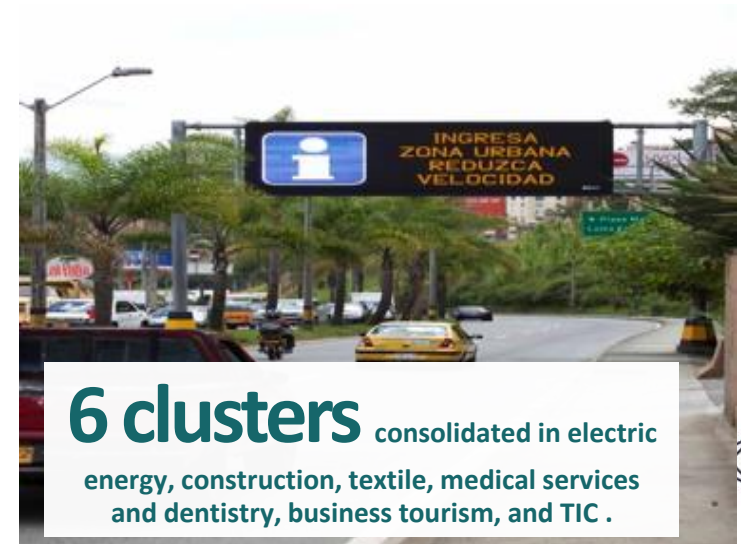
**2013** recognized as the most innovative city



**4,2%** was the GDP growth in 2014, surpassing cities like: Monterrey, Barcelona, Manchester y Chicago.

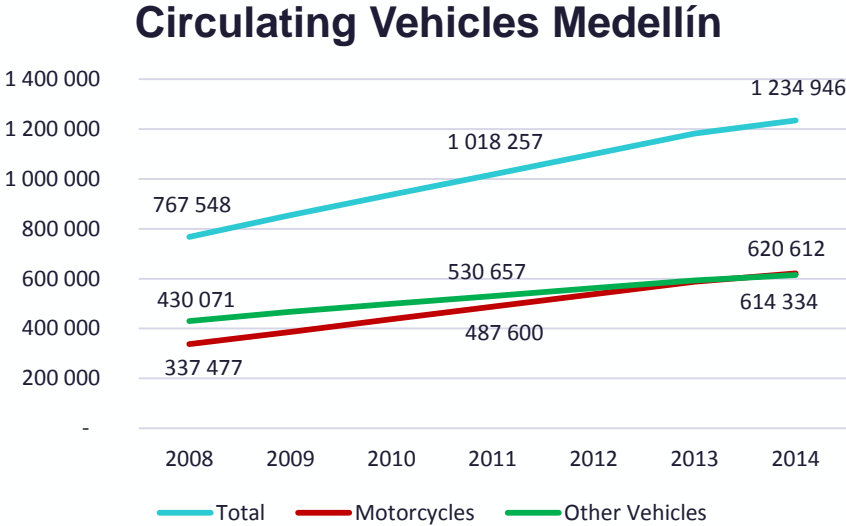


**Second** most populated city in the country

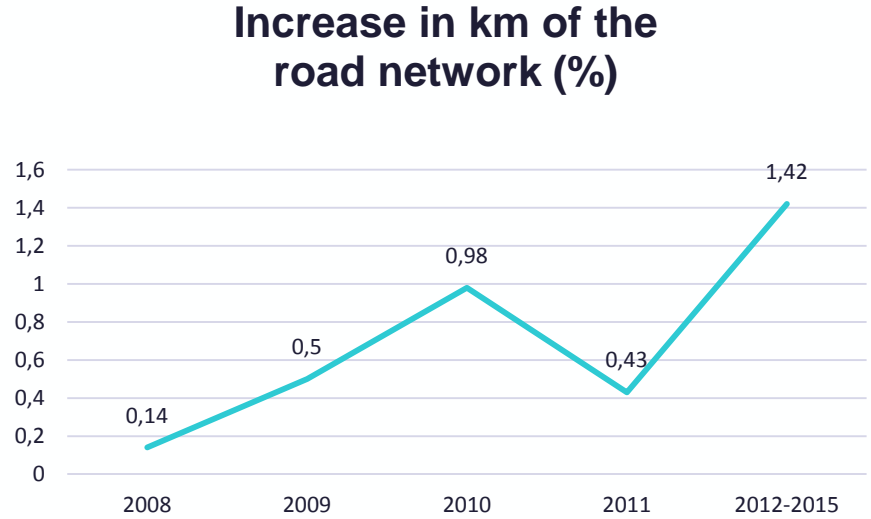


**6 clusters** consolidated in electric energy, construction, textile, medical services and dentistry, business tourism, and TIC .

# Rise of the vehicle fleet and road network



The vehicle fleet has doubled in the last 8 years.



The road network has grown 1.42% in the last 4 years.

Medellin is affected by a large traffic congestion, it has a deficiency in terms of the road networks which makes it even more challenging.

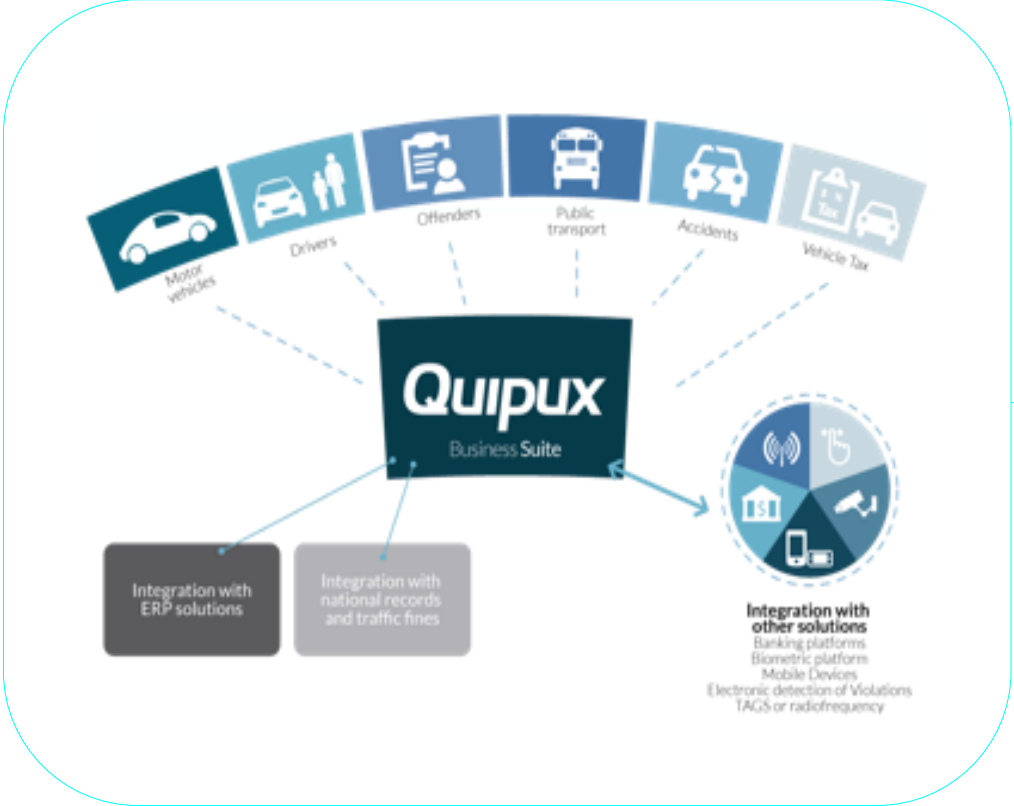




# Respecting the rules of law



# Smart Mobility Systems



# Smart Mobility System



**24/7** Operation



**22**  
Information panels



**228 mil**  
Followers @sttmed



**40**  
Cameras



**120**  
Cameras



**80**  
Cameras



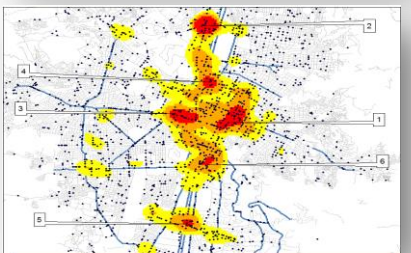
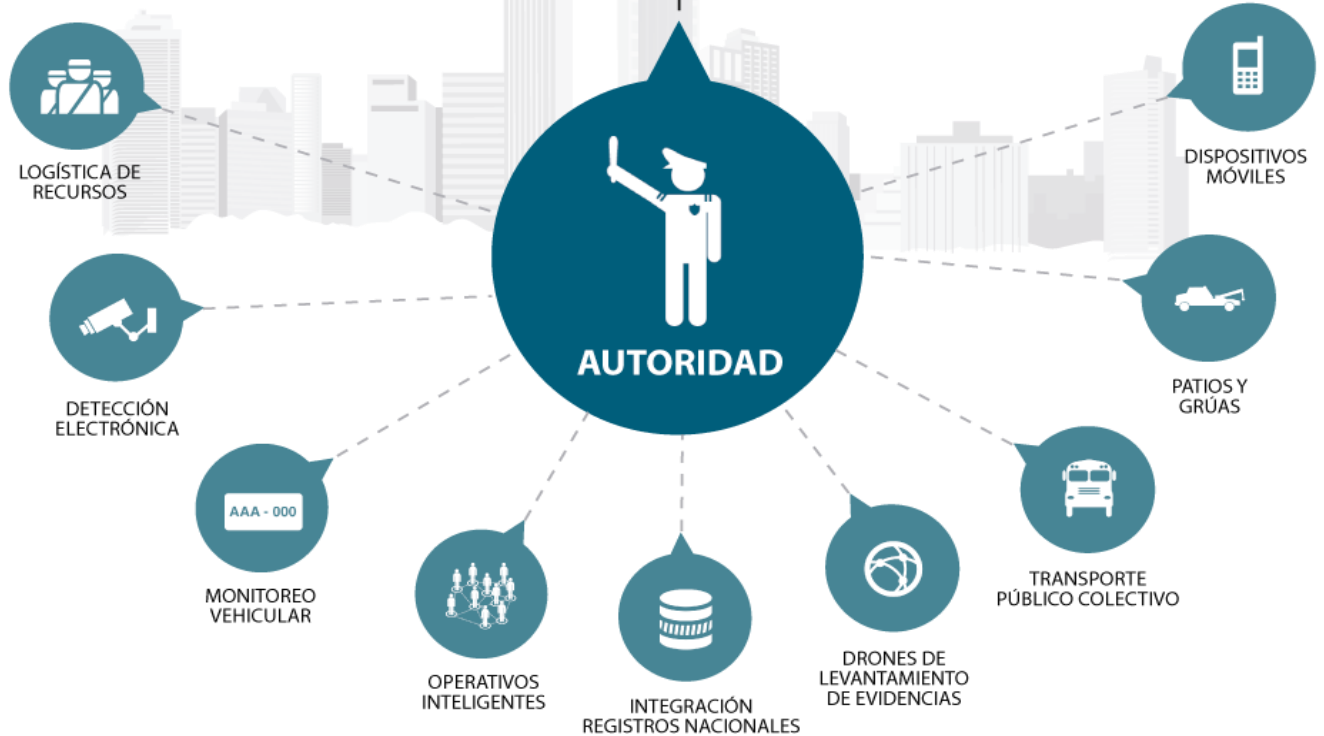
**7**  
Integrated components



**823**  
Integrated security cameras— SIES-M



# Solutions strengthen the authority



# Achievements



**341**

Avoided injured people (23%)



**37**

Saved lives (12%)



**USD 35 million**

The money the city has saved in socio-economic costs due to traffic accidents



**>300K**

People save time, due to timely and verified information on the SIMM's social networks (Twitter, Facebook, Youtube y Flickr)



**65%**

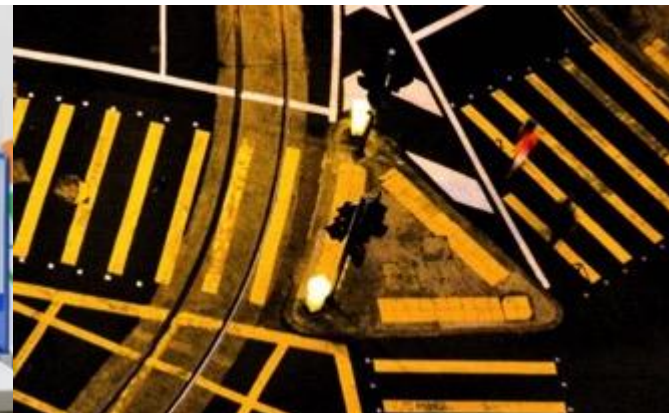
Decrease in photo-detection due to red light crossing and

**69%** in pedestrian walkway invasion



**52K**

Less photo-detections due to speed exceeding between 2013 y 2014



# Achievements



**44% Decrease**  
in accidents mortality per  
10.000 vehicles from 2007



**74% less**  
sanctioned drivers in  
traffic accidents due to  
surpassing the speed limit



**The most  
innovative city**  
By the Wall Street Journal in  
2012



**27% less**  
Speed photo  
detections



# Achievements



## 23 minutes

Last the attention of incidents.  
Before this, the time of attention  
was 1:30 hr. Saving 193.000 hours  
of traffic jam.



## 1 million

In-movement vehicle license plates  
daily read.



## 69% less

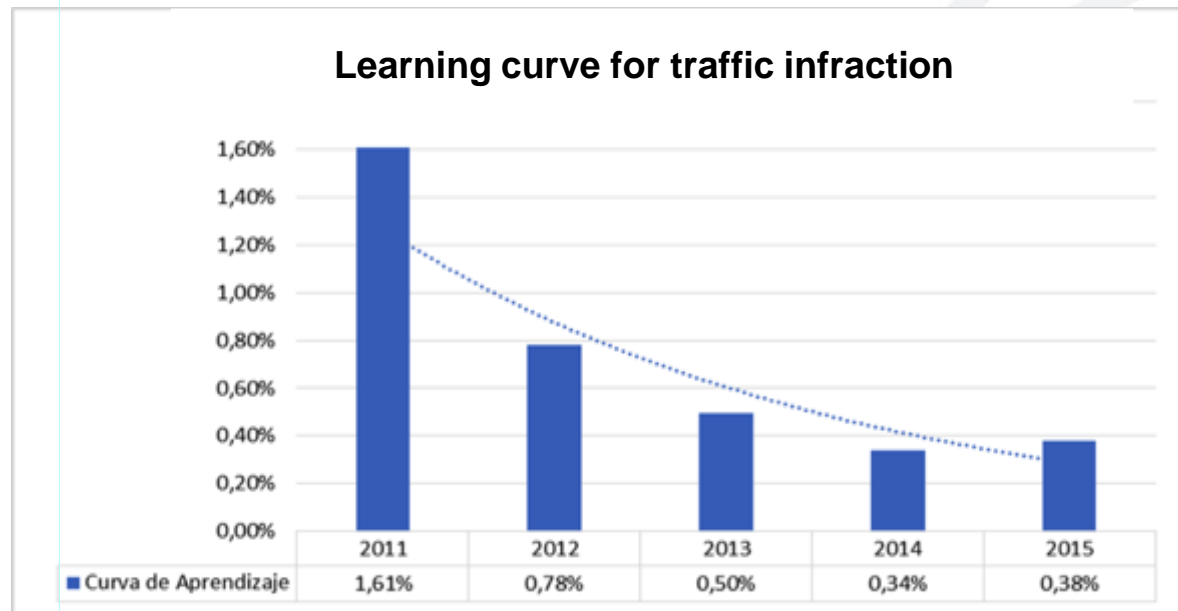
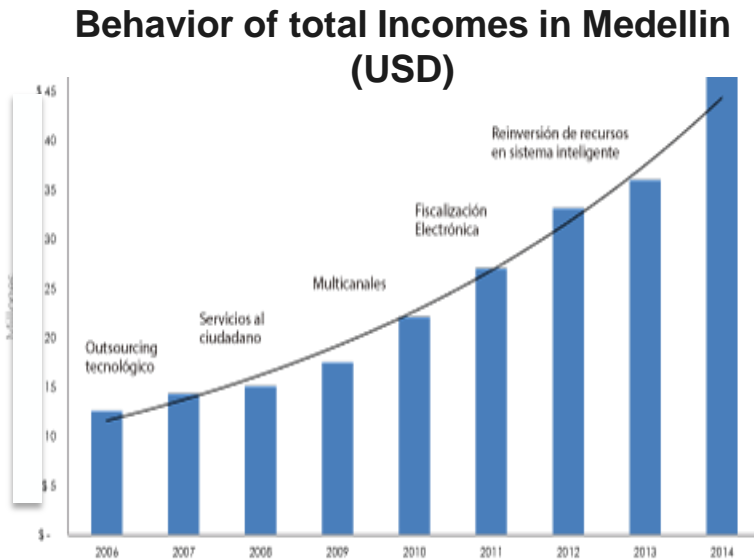
 sanctioned drivers in  
traffic accidents due to  
red-light running.

## 4 per 1.000

 vehicles commit  
an offense. Before this project were  
24 per 1.000.

# Self-sustaining private public partnership model

The growing revenue growth allows to expand the services and the investments in new technologies, letting the model to be self-sustainable



- ✓ It is not just a matter of financing but a service model
- ✓ Contracts: Public-private partnership, concessions, services
- ✓ Self-sustaining projects that generate income for public entities





# Smart citizens for smart cities





Thank you

QUIPUX